

CUADRO DE COORDENADAS

ETAPAS					WGS 84	
VERTICE	LADO	DISTANCIA	ANG. INTERNO	ESTE (X)	NORTE (Y)	
A	A-B	12.88	180°2'11"	508449.1385	9438710.8294	
B	B-C	6.85	180°0'19"	508455.7791	9438699.0523	
C	C-D	237.78	90°8'2"	508455.8512	9438693.7971	
D	D-E	871.82	69°20'48"	508234.8500	9438608.0585	
E	E-F	71.01	74°23'23"	508234.8500	9439277.8761	
F	F-G	32.74	105°38'37"	508303.2411	9439258.5977	
G	G-H	108.02	184°13'4"	508303.2411	9439228.8287	
H	H-I	87.03	188°54'2"	508311.1788	9439118.2247	
I	I-J	25.95	183°1'3"	508324.0994	9439052.4894	
J	J-K	11.47	181°12'52"	508330.4372	9439027.3040	
K	K-L	111.98	184°0'22"	508333.4733	9439016.2438	
L	L-M	82.98	182°4'20"	508370.5843	9438910.8821	
M	M-N	9.80	180°0'50"	508389.9211	9438861.3416	
N	N-A	152.14	180°2'9"	508393.4306	9438852.4059	
TOTAL		1570.83	2160°0'0"			

AREA = 79,938.77 m²
PERIMETRO = 1,570.83 ml.

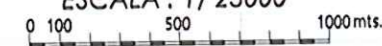
ETAPAS					PSAD 56	
VERTICE	LADO	DISTANCIA	ANG. INTERNO	ESTE (X)	NORTE (Y)	
A	A-B	12.88	180°2'11"	508449.3211	9439085.1341	
B	B-C	6.85	180°0'19"	508701.9837	9439073.3570	
C	C-D	237.78	90°8'2"	508704.0358	9439068.1018	
D	D-E	871.82	69°20'48"	508483.0348	9438980.3812	
E	E-F	71.01	74°23'23"	508483.0348	9438851.9808	
F	F-G	32.74	105°38'37"	508551.4287	9438832.8724	
G	G-H	108.02	184°13'4"	508551.4287	9438800.1334	
H	H-I	87.03	188°54'2"	508559.3814	9438492.5294	
I	I-J	25.95	183°1'3"	508572.2840	9438428.7741	
J	J-K	11.47	181°12'52"	508578.8218	9438401.8087	
K	K-L	111.98	184°0'22"	508581.8579	9438390.8485	
L	L-M	82.98	182°4'20"	508618.7489	9438284.9688	
M	M-N	9.80	180°0'50"	508638.1057	9438235.8462	
N	N-A	152.14	180°2'9"	508641.8152	9438228.7108	
TOTAL		1570.83	2160°0'0"			

AREA = 79,938.77 m²
PERIMETRO = 1,570.83 ml.

ING. ELMER LUIGI TUME ESPINOZA
SUB GERENTE DE OBRAS, DESARROLLO URBANO Y RURAL
MUNICIPALIDAD DISTRITAL DE LA HUACA - PAITA



PLANO DE UBICACIÓN
ESCALA: 1/25000



Carretera Interoceánica Baita - Piura



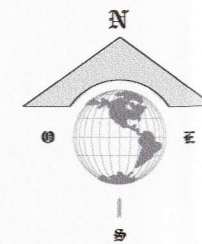
MUNICIPALIDAD DISTRITAL DE LA HUACA
DEPARTAMENTO DE OBRAS PRIVADAS Y CATASTRO

PROFESIONAL RESPONSABLE: **ING. ELMER LUIGI TUME ESPINOZA**

PLANO: PLANO CATASTRAL SUBLOTE IA - VALLE SAGRADO - ETAPA X ESCALA: INDICADA	FECHA: SETIEMBRE 2023	LAMINA: PC-01
---	------------------------------	-------------------------

TERRENO SIN CONDICIÓN JURIDICA

PROP. AGROPECUARIA E.I.R.L.
SERV. GEN. HNOS. M & M SRL.
PROP. JOAQUIN CORDOVA ROJAS



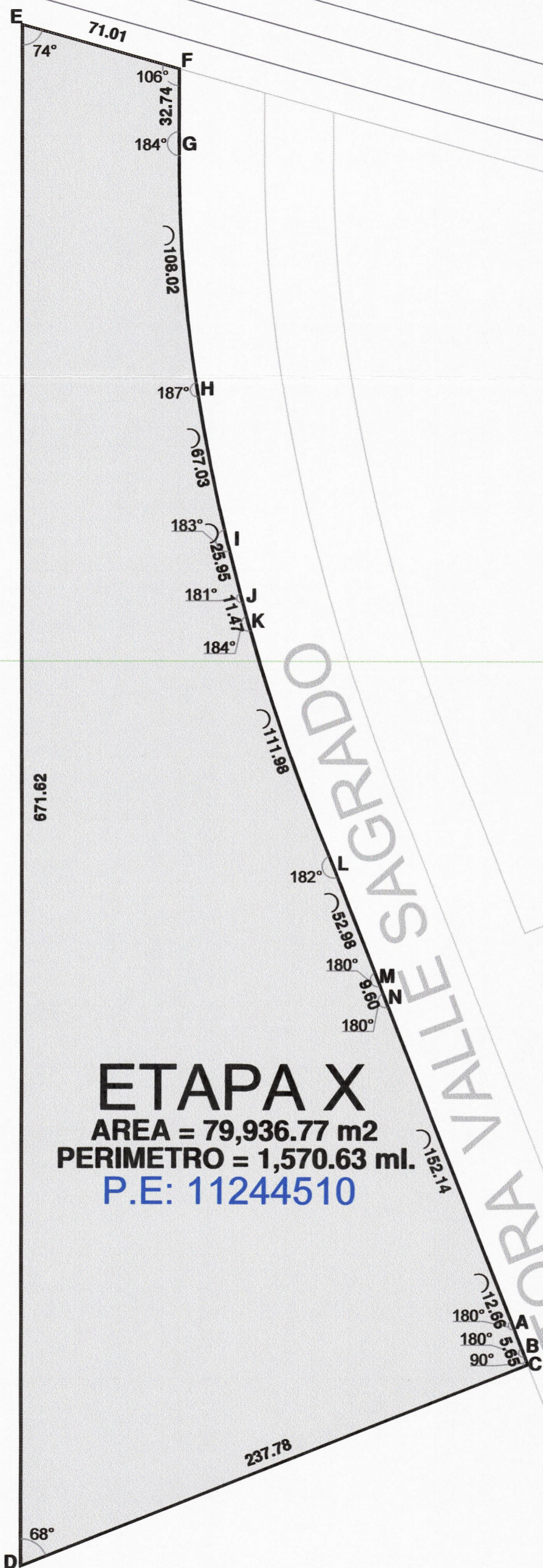
CUADROS DE COORDENADAS

ETAPA X				WGS 84	
VERTICE	LADO	DISTANCIA	ANG. INTERNO	ESTE (X)	NORTE (Y)
A	A-B	12.66	180°2'11"	508449.1365	9438710.8294
B	B-C	5.65	180°0'19"	508453.7791	9438699.0523
C	C-D	237.78	90°8'2"	508455.8512	9438693.7971
D	D-E	671.62	68°20'46"	508234.8500	9438606.0565
E	E-F	71.01	74°23'23"	508234.8500	9439277.6761
F	F-G	32.74	105°36'37"	508303.2411	9439258.5677
G	G-H	108.02	184°13'4"	508303.2411	9439225.8287
H	H-I	67.03	186°54'2"	508311.1768	9439118.2247
I	I-J	25.95	183°1'3"	508324.0994	9439052.4694
J	J-K	11.47	181°12'52"	508330.4372	9439027.3040
K	K-L	111.98	184°0'22"	508333.4733	9439016.2438
L	L-M	52.98	182°4'20"	508370.5643	9438910.6621
M	M-N	9.60	180°0'50"	508389.9211	9438861.3415
N	N-A	152.14	180°2'9"	508393.4306	9438852.4059
TOTAL		1570.63	2160°0'0"		

AREA = 79,936.77 m2
PERIMETRO = 1,570.63 ml.

ETAPA X				PSAD 56	
VERTICE	LADO	DISTANCIA	ANG. INTERNO	ESTE (X)	NORTE (Y)
A	A-B	12.66	180°2'11"	508697.3211	9439085.1341
B	B-C	5.65	180°0'19"	508701.9637	9439073.3570
C	C-D	237.78	90°8'2"	508704.0358	9439068.1018
D	D-E	671.62	68°20'46"	508483.0346	9438980.3612
E	E-F	71.01	74°23'23"	508483.0346	9439651.9808
F	F-G	32.74	105°36'37"	508551.4257	9439632.8724
G	G-H	108.02	184°13'4"	508551.4257	9439600.1334
H	H-I	67.03	186°54'2"	508559.3614	9439492.5294
I	I-J	25.95	183°1'3"	508572.2840	9439426.7741
J	J-K	11.47	181°12'52"	508578.6218	9439401.6087
K	K-L	111.98	184°0'22"	508581.6579	9439390.5485
L	L-M	52.98	182°4'20"	508618.7489	9439284.9668
M	M-N	9.60	180°0'50"	508638.1057	9439235.6462
N	N-A	152.14	180°2'9"	508641.6152	9439226.7106
TOTAL		1570.63	2160°0'0"		

AREA = 79,936.77 m2
PERIMETRO = 1,570.63 ml.



ETAPA X
AREA = 79,936.77 m2
PERIMETRO = 1,570.63 ml.
P.E: 11244510

ETAPA IX

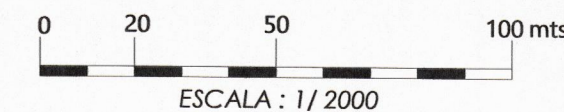
ETAPA VIII

ETAPA VII

ETAPA XI



ING. ELMER LUGI TUME ESPINOZA
SUB GERENTE DE OBRAS, DESARROLLO URBANO Y RURAL
MUNICIPALIDAD DISTRITAL DE LA HUACA - PAIPA





MUNICIPALIDAD DE LA HUACA
avanzamos contigo
Gestión 2023 - 2026



MUNICIPALIDAD DISTRITAL DE LA HUACA
DEPARTAMENTO DE OBRAS PRIVADAS Y CATASTRO

LAMINA:
PC-02

PROFESIONAL RESPONSABLE: **ING. ELMER LUGI TUME ESPINOZA**

PLANO: **PLANO CATASTRAL SUBLOTE IA - VALLE SAGRADO - ETAPA X**

ESCALA: **INDICADA** FECHA: **SETIEMBRE 2023**